

NAME – RAJDEEP JAISWAL

DATE – 29 SEPT 2021

BRANCH – BTECH CSE

SEC = 13 A

UID -20BCS2761

SUB- DBMS

Q 1-Translate an Entity set and Relationship set. List and explain the symbols used to draw ER Diagram.

E/R model: review

Entity sets

- Keys
- Weak entity sets

Relationship sets

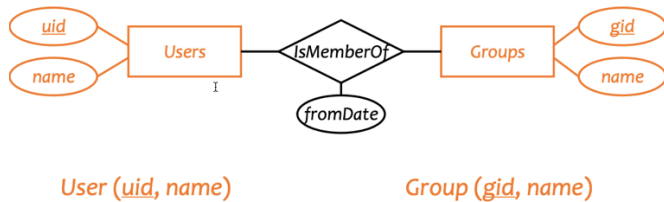
- Attributes on relationships
- Multiplicity
- Roles

Er diagram stand for Entity Relationship Diagram ,also known as Erd Diagram that display the relationship of entity sets stored in databases.

It contains all different symbols that uses rectangles to repeat entities, Oval to define attributes & diamonds shapes to represent relationship.

Translating entity sets

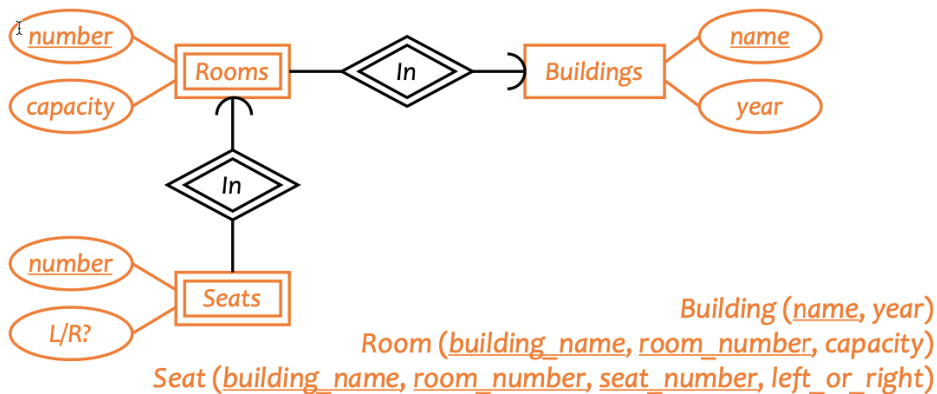
- An entity set translates directly to a table
- Attributes → columns
- Key attributes → key columns



Translating weak entity sets

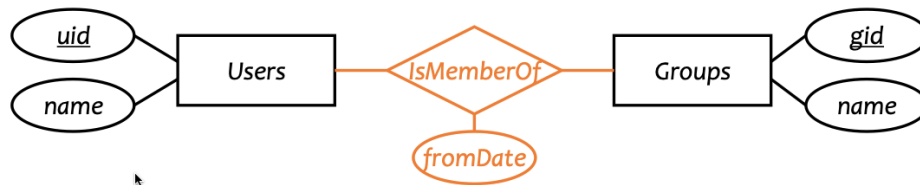
Remember the “borrowed” key attributes

- Watch out for attribute name conflicts



Translating relationship sets

- A relationship set translates to a table
- Keys of connected entity sets → columns
- Attributes of the relationship set (if any) → columns
- Multiplicity of the relationship set determines the key of the table

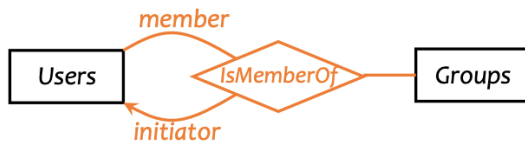


Member (uid, gid, fromDate)

Examples



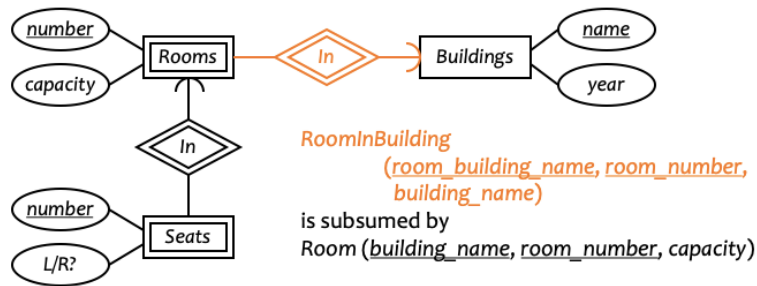
Parent (parent_uid, child_uid)



Member (uid, initiator_uid, gid)

Translating double diamonds?

- Recall that a double-diamond (supporting) relationship set connects a weak entity set to another entity set
- No need to translate because the relationship is implicit in the weak entity set's translation



14

A complete example

